

Welcome!

A graphic consisting of two overlapping, curved, teardrop-shaped shapes. The top shape is yellow and the bottom shape is red. They are positioned on the left side of the slide, pointing towards the right.

**BANNER
BANK**



Member FDIC

Working With Lenders

Guillermo Sandoval
Community Development Officer
Portland, Oregon



Member FDIC

How Can Your Habitat Chapter Partner with a Community Bank?

- Monetary Donations and Volunteer Time
- Construction Line of Credit
- Federal Home Loan Bank of Seattle AHP and Downpayment Assistance Programs
- Foreclosed Properties in Your Area



Donations

- The Bank has an application process for donations:
 - Requests under \$1,000
 - Requests over \$1,000
- We will ask that a “Request for Community Support” be completed and only requests from our Market Area will be considered.
- Typically, first time requests receive up to \$1,000
- Recurring donations to the same organization may be provided at management’s discretion.



Member FDIC



Construction Lines of Credit

- Construction to Permanent Financing
- Interest-Only during construction with low loan fees
- We allow the home to be sold on contract to qualified Habitat for Humanity families
- Favorable interest rates to qualified chapters
- Standard loan documents such as appraisal, title insurance, flood certifications are required.



Member FDIC



Federal Home Loan Bank of Seattle Programs

- We can help you or a group of HFH chapters team up to submit an Affordable Housing Program Grant
 - Grant can be used as downpayment assistance to help with affordability
- HomeStart Downpayment Assistance can be used on Non-AHP sponsored homes
 - Unfortunately, the FHLB has cut-back funding for HomeStart but may be available to you from participating banks



Foreclosed Properties

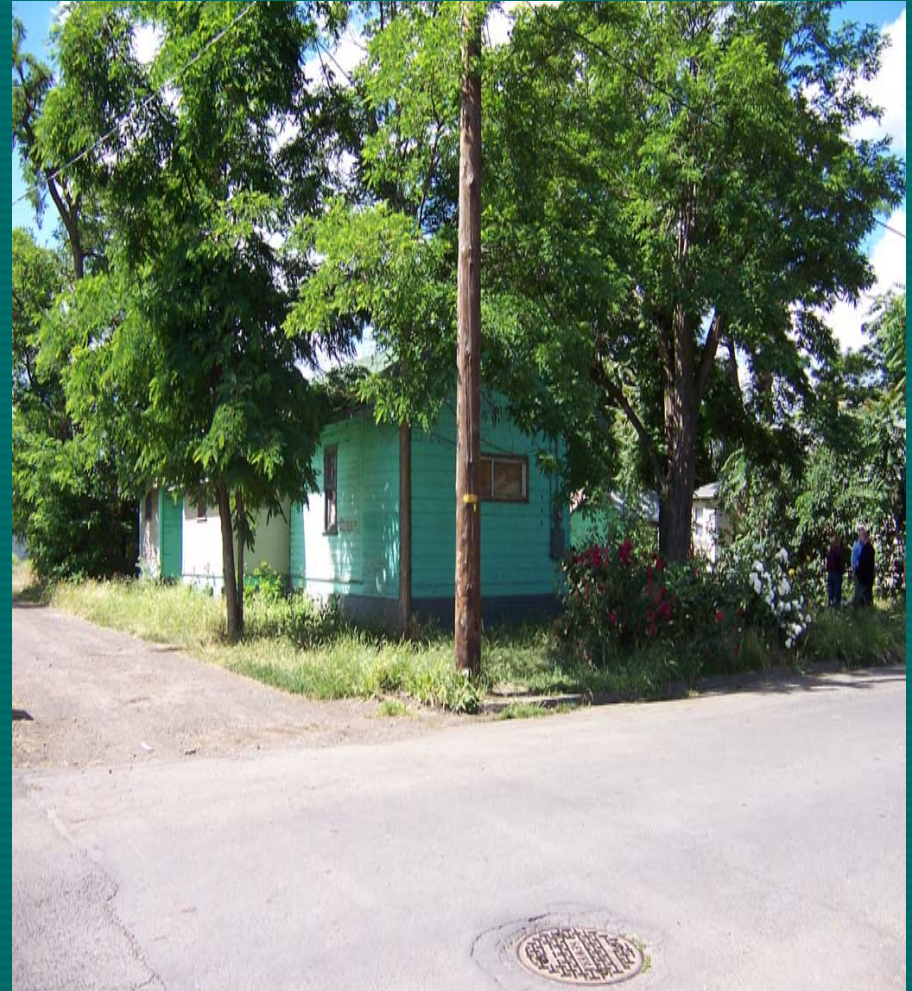
- Check with local banks and inquire about their foreclosure inventory
 - The bank may be willing to sell you the home at a reduced price or possibly even donate the property to you!
- Emphasize that your organization will turn that foreclosure into a valuable asset to the community by providing home ownership and the pride that comes with it.



Member FDIC

Real Life Example

- Banner Bank teams up with HFH Blue Mountain Partners in Walla Walla
- 40 employees donated over 600 hours of labor



Member FDIC

Construction Pictures



Member FDIC