

FEDERAL RESERVE BANK OF SAN FRANCISCO

WORKING PAPER SERIES

Local Projections for Applied Economics

Oscar Jordà
Federal Reserve Bank of San Francisco
University of California, Davis
CEPR

July 2023

Working Paper 2023-16

<https://www.frbsf.org/economic-research/publications/working-papers/2023/16/>

Suggested citation:

Jordà, Oscar. 2023 “Local Projections for Applied Economics,” Federal Reserve Bank of San Francisco Working Paper 2023-16. <https://doi.org/10.24148/wp2023-16>

The views in this paper are solely the responsibility of the authors and should not be interpreted as reflecting the views of the Federal Reserve Bank of San Francisco or the Board of Governors of the Federal Reserve System.

Local projections for applied economics ^{*}

Òscar Jordà[†]

July 2023

Abstract

The dynamic causal effect of an intervention on an outcome is of paramount interest to applied macro- and micro-economics research. However, this question has been generally approached differently by the two literatures. In making the transition from traditional time series methods to applied microeconometrics, local projections can serve as a natural bridge. Local projections can translate the familiar language of vector autoregressions (VARs) and impulse responses into the language of potential outcomes and treatment effects. There are gains to be made by both literatures from greater integration of well established methods in each. This review shows how to make these connections and points to potential areas of further research.

Keywords: *local projections, vector autoregressions, panel data, potential outcomes*

^{*}I am grateful to H elen  Rey for suggesting that I write this review and to my colleagues Colin Cameron, James Cloyne, Alan M. Taylor and Takuya Ura for helpful suggestions and comments. The views expressed in this paper are the sole responsibility of the author and do not necessarily reflect the views of the Federal Reserve Bank of San Francisco or the Federal Reserve System. <https://doi.org/10.1146/annurev-economics-082222-065846>.

[†]Federal Reserve Bank of San Francisco; and Department of Economics, University of California, Davis; and CEPR (oscar.jorda@sf.frb.org; ojorda@ucdavis.edu).

1. INTRODUCTION

Impulse response functions estimated with vector autoregressions (VARs) are a standard statistic used to investigate dynamic macroeconomic relationships. Though many associate impulse responses with [Sims \(1980\)](#), there are references in economics already in [Frisch \(1933\)](#). Of course, before their arrival to economics, impulse responses could trace their origin to the field of signal processing. A. W. Phillips (of the Phillips curve fame), built a hydromechanical analog computer in 1949 (known as the Monetary National Income Analogue Computer or MONIAC) to illustrate the inner workings of Keynesian and Robertsonian economics. The effects of monetary policy were modulated by the flow of water through a system of pipes and valves representing different sectors of the economy, which activated a pen that drew an impulse response on a roll of graphing paper.

Traditionally, estimation of impulse responses has been viewed as a time series exercise that requires characterizing the entire dynamic system under consideration in order to study how policy interventions propagate over time, just as Phillip's MONIAC did. VARs were just a convenient and useful empirical approximation to such a dynamic system. Local projections ([Jordà, 2005](#)) shifted this system perspective to one where the impulse response could be directly estimated with univariate methods, and without reference to other parts of the system.

Local projections (LPs) compare two conditional means of a future outcome given today's available information, one of which is subject to an intervention while the other is not. Immediately, one can think of this situation as comparing two forecasts under different circumstances, or as comparing the conditional mean of treated versus control subpopulations. Further, because forecasts and impulse responses are tightly linked, it quickly becomes apparent that traditional time series concepts and policy evaluation ideas stemming from the Rubin Causal Model ([Rubin, 1974](#)) must be tightly connected as well. One area can benefit from the time series tradition of modeling dynamic relationships, as much as the other area can benefit from a rich tradition in the identification of causal effects. Though seemingly obvious, the connection took some time to sprout (see e.g. [Angrist & Kuersteiner, 2011](#); [Angrist, Jordà & Kuersteiner, 2018](#)), just as it took some time to make the connection between direct forecasts (see, e.g. [Cox, 1961](#); [Klein, 1968](#)) and impulse responses ([Jordà, 2005](#)).

The flexibility of LPs, which helps establish this macro-micro nexus, is at the same time a potential weakness. Because LPs are a univariate semi-parametric approach, they cannot compete in mean-squared error terms with the specification of a traditional structural multivariate time series model (see, e.g. [Plagborg-Møller & Wolf, 2021](#); [Li, Plagborg-Møller](#)

& Wolf, 2022), even though in population, they estimate the same response in many settings (again, see Plagborg-Møller & Wolf, 2021). This should come as no surprise. The more restrictions one can place in describing the data, the more efficient the estimates, the smaller the mean squared forecast errors, and the broader the scope to experiment with policy variations within the model. Moreover, since many models of the macroeconomy have solutions (or approximate solutions) that consist of a system of linear difference/differential equations, it is natural to impose the same structure on the data to extract estimates of the deep parameters of the model. LPs are not universally preferable and one must recognize those situations where alternative methods have an edge.

However, by the same token, neither are traditional multivariate time series models universally preferable. For example, the consistency of an impulse response estimator depends on the truncation lag used to specify the infinite order approximation (see, e.g. Kuersteiner, 2005; Jordà, Singh & Taylor, 2020; Plagborg-Møller & Wolf, 2021). This issue of potential misspecification is easily resolved using LPs (see, e.g. Jordà, Singh & Taylor, 2020). Moreover, the natural efficiency losses of a less restrictive model, such as LPs, can often be significantly reduced, as several authors have shown (see, e.g. Lusompa, 2021; Barnichon & Brownlees, 2019; Li et al., 2022; Montiel Olea & Plagborg-Møller, 2021). Moreover, in infinite order settings, Xu (2023) shows that LPs are semiparametrically efficient if the order is allowed to grow with the sample. Importantly, just because a theoretical model of the economy is written in linear form, it does not mean that a structural linear multivariate model will describe the data correctly. More recently, the desire to stratify the responses according to some economic condition (see, e.g. Auerbach & Gorodnichenko, 2012; Jordà & Taylor, 2016; Tenreyro & Thwaites, 2016; Ramey & Zubairy, 2018), is trivially met using LPs, but it is much harder to meet using VARs. In general, nonlinearities can be investigated more easily in univariate rather than multivariate models.

The trade-off between VARs and LPs evokes that between least-squares (OLS) and instrumental variables (IV) estimation. IV estimates are always less efficient (often times, wildly so), yet much of the profession prefers them to OLS estimates, almost regardless of the efficiency loss. The premium is on bias over efficiency, not on minimizing mean-squared error loss.¹ LPs by themselves do not resolve the issue of identification. However, researchers may prefer using LPs over VARs in settings where getting the dynamic response correctly is at a premium. More generally, efficiency losses in LPs can be greatly contained relative to the substantial bias improvements at medium- to long-horizons, specially with persistent data.

¹Though admittedly, this is a trade-off worth revisiting.

These issues become more pronounced as researchers tackle panel data and generally richer data sets. Moreover, the natural stratification resulting from the policy evaluation paradigm and the Kitagawa-Oaxaca-Blinder decomposition (Kitagawa, 1955; Oaxaca, 1973; Blinder, 1973), does not fit traditional structural time series models well, whereas it is naturally accommodated using LPs (see Cloyne, Jordà & Taylor, 2023). Going the other way, policy evaluation of interventions that have effects over time, or interventions administered over time, with perhaps different doses each time, could greatly benefit from the lessons learned over the past 40 years of applied macroeconomic research.

Extensions to panel data applications look like a specially fruitful area for LPs. In recent research, Dube, Girardi, Jordà & Taylor (2023) show that in difference-in-differences (DiD) settings with absorbing but heterogeneous treatments, LPs can greatly simplify the analysis and can even accommodate repeated treatments, thereby encompassing several of the methods recently proposed in the literature to tackle specific situations. Similar recent developments, such as regression discontinuity designs, probably deserve further exploration with LPs.

This review focuses on the applied macro-micro nexus through the method of local projections. The goal is not to provide an encyclopedic review of the local projections literature, but rather highlight recent developments and avenues for research. The more points of commonality between these two venerable literatures, the more opportunities there are to advance each field through cross-pollination. The review therefore spends the first few sections going over basic estimation and inferential procedures for LPs, and then dedicates the second half to showcase LP applications that take advantage of widely used policy evaluation methods.

2. A BRIEF INTRODUCTION TO LOCAL PROJECTIONS

Let me begin by briefly discussing the intuition behind local projections with a simple example. Suppose w_t refers to a vector of stationary random variables observed over $t = 1, \dots, T$ periods. I assume stationarity for simplicity although it is not necessary more generally.² Further assume that $w_t = (w_{1t}, \dots, w_{jt}, \dots, w_{kt})'$ for $j = 1, \dots, k$ follows a simple VAR(1)³:

$$(w_t - \mu) = A(w_{t-1} - \mu) + \epsilon_t; \quad \epsilon_t \sim D(\mathbf{0}, \Omega). \quad (1)$$

²I am purposefully vague in the statement of many conditions to make the article more accessible. Formal statements can be found in the references provided.

³I will use boldface to indicate vectors, and capital letters for matrices.

It is well-known that the response of w_{jt+h} due to a shock of size δ_i in ϵ_t is simply:

$$\mathcal{R}_{ij}(h) = E[w_{jt+h} | \epsilon_t = \delta_i; \mathbf{w}_{t-1}] - E[w_{jt+h} | \epsilon_t = \mathbf{0}; \mathbf{w}_{t-1}] = A_{[j, \cdot]}^h \delta_i,$$

for $h = 0, 1, \dots, H$ and where $A_{[j, \cdot]}^h$ denotes the j^{th} row of the matrix A raised to the h^{th} power. Here δ_i refers to the size of the shock for each component of ϵ_t chosen by the experimenter to reflect an identified experiment to the i^{th} variable in \mathbf{w}_t . Since the residuals ϵ_t are usually correlated with one another, δ_i can be seen as the linear combination that recovers the underlying structural residuals for the i^{th} variable. I set aside different ways to achieve identification (i.e., finding the right δ_i) to later sections. Finally, I use the notation $\mathcal{R}_{ij}(h)$ to denote the response from a shock in variable i to variable j , h periods after the initial intervention or shock.

Though this may seem like a restrictive example, note that the state-space representation of a VAR with p lags (a VAR(p)), and the approximate representation of other interesting stochastic processes, have a VAR(1) representation. The more general case is derived in [Jordà \(2005\)](#). Further, for cointegrated systems see [Chong, Jordà & Taylor \(2012\)](#), which shows how to decompose an impulse response in terms of the dynamics due to long-run equilibria and due to short-run dynamics separately. [Jordà \(2005\)](#) and [Plagborg-Møller & Wolf \(2021\)](#) formally establish the asymptotic equivalency of LPs and VARs under a variety of identification assumptions and [Stock & Watson \(2018\)](#); [Plagborg-Møller & Wolf \(2021\)](#) present the conditions under which instrumental variables and LPs can be used to identify non-invertible⁴ systems. Importantly, it is not necessary to assume that the data are generated by a VAR, it simply helps with the intuition.

As long as the model in [Equation 1](#) accurately represents the data generating process (DGP), a consistent estimate of the coefficient matrix A is all that is needed to calculate the impulse response at any horizon.

The LP approach instead uses recursive substitution,⁵ yielding:

$$(\mathbf{w}_{t+h} - \boldsymbol{\mu}) = A^{h+1}(\mathbf{w}_{t-1} - \boldsymbol{\mu}) + A^h \boldsymbol{\epsilon}_t + \dots + A^0 \boldsymbol{\epsilon}_{t+h},$$

with $A^0 = I$. The previous expression suggests that a regression of w_{jt+h} on \mathbf{w}_{t-1} such as:

$$w_{jt+h} = c_{jh} + \boldsymbol{\beta}_{jh+1} \mathbf{w}_{t-1} + v_{jt+h}; \quad \mathbf{v}_{t+h} = B_h \boldsymbol{\epsilon}_t + \dots + B_0 \boldsymbol{\epsilon}_{t+h}; \quad (2)$$

⁴Loosely speaking, a non-invertible system is one where the structural residuals cannot be recovered from the reduced-form residuals.

⁵Note that recursive substitution does not require stationarity.

for $h = 0, 1, \dots, H$ gives us an estimate of the impulse response since

$$\mathcal{R}_{ij}(h) = E[w_{jt+h} | \epsilon_t = \delta_i; \mathbf{w}_{t-1}] - E[w_{jt+h} | \epsilon_t = \mathbf{0}; \mathbf{w}_{t-1}] = \beta_{jh} \delta_i,$$

which will be equal to $A_{[j, \cdot]}^h \delta_i$ as long as the DGP coincides with that in [Equation 1](#). Note that $B_h = A^h$ in this simple example.

As discussed in [Jordà \(2005\)](#), estimates based on [Equation 2](#) have several advantages, some of which are worth highlighting. First, [Equation 2](#) can be estimated equation by equation, which makes estimation of nonlinearities and stratification simpler, examples of which are discussed in later sections; second, [Equation 2](#) is a direct estimate of the impulse response so that standard errors do not require the delta method or simulation-based methods (though they require adjusting for the serial correlation in the residuals or lag-augmentation, as we shall see); and third, it is less sensitive to misspecification since each impulse response coefficient is estimated using a different regression. One can broadly think of local projections as a semiparametric approach to estimating impulse responses.

Moreover, when instruments are available, estimation of [Equation 2](#) can be done with the method of instrumental variables (see, e.g. [Jordà & Taylor, 2016](#); [Ramey & Zubairy, 2018](#)). I postpone a more detailed discussion of instrumental variables (IV) estimation to [Section 5](#), where I discuss how to estimate local projections generically using the generalized method of moments of GMM; and [Section 7](#), where I provide formal conditions for IV estimation. Here though, there exist parallels with the literature on proxy VARs, where instruments are used to identify structural shocks from reduced-form shocks (see, e.g., [Stock & Watson, 2012](#); [Mertens & Ravn, 2013](#)).

3. TRANSFORMATIONS AND MULTIPLIERS

Macroeconomics data often exhibit trending behavior. Think of GDP, or the price level over time, for example. Such trends can often be well described by a unit root—in time series parlance, they are $I(1)$ or integrated of order one. If the data are log-transformed, the first difference can be interpreted as the approximate percentage change in the variable (for example, the growth rate of GDP or the rate of inflation). To fix ideas, let y_t denote the log of an $I(1)$ variable, let the first-difference be denoted as $\Delta y_t = y_t - y_{t-1}$, and let the *long* difference be denoted as $\Delta_h y_{t+h} = y_{t+h} - y_{t-1}$. The latter measures the approximate percentage change in the outcome, from $t - 1$ to h periods in the future. In addition and for later use, let s_t denote a (randomly assigned) intervention of interest (to make things simple).

LPs can be estimated on the long-differences ($\Delta_h y_{t+h}$), or the first-differences (Δy_{t+h}) in response to an intervention s_t .⁶ However, the interpretation of the impulse response is different in each case. LPs on $\Delta_h y_{t+h}$ measure the overall percentage change in the outcome since intervention. Notice that $\Delta_h y_{t+h} = y_{t+h} - y_{t+h-1} + y_{t+h-1} + \dots - y_t + y_t - y_{t-1} = \Delta y_{t+h} + \dots + \Delta y_t$. Adjusting the notation to indicate that s is the intervention that affects the outcome y however transformed, this means that the LP on the long-difference measures the cumulative of the per-period percentage changes, that is $\mathcal{R}_{sy}(h) = \mathcal{R}_{s\Delta_h y}(h) = \sum_{j=0}^h \mathcal{R}_{s\Delta y}(j)$.

A related statistic of interest is the *multiplier*. An early reference to the multiplier can be found in Keynes (1936). The Keynesian (fiscal) multiplier compares two dynamic responses. The fiscal impetus in the first year where a fiscal package is passed has effects on output that are felt over subsequent years. From this perspective, the multiplier might seem quite large. However, fiscal packages are usually implemented over years, so that the overall effect of the fiscal package is best evaluated as the ratio of the overall gains in output relative to the overall fiscal expenditures over the duration of the package.

Therefore, the multiplier can be calculated as the sum of the cumulative changes in GDP due to the fiscal package over the cumulative sum of changes in the deficit due to the fiscal package. It is clear that the multiplier will be of interest in any setting in which an intervention is administered over several periods (call it a *treatment plan*) and one is interested in evaluating the overall effect of the treatment plan and not just the first intervention.

Consider a stripped down model to fix ideas. Suppose $y_t = \gamma s_t + u_t^y$ and that $s_t = \rho s_{t-1} + u_t^s$ with $E(u_t^y, u_r^s) = 0$ for any value of r . In this simple model the treatment variable s_t is randomly assigned, though treatments are serially correlated. It is easy to see that $\mathcal{R}_{sy}(h) = \gamma \rho^h$ and $\mathcal{R}_{ss}(h) = \rho^h$. Define the multiplier as:

$$m_h = \frac{\sum_{j=0}^h \mathcal{R}_{sy}(j)}{\sum_{j=0}^h \mathcal{R}_{ss}(j)} = \frac{\gamma \sum_{j=0}^h \rho^j}{\sum_{j=0}^h \rho^j} = \gamma. \quad (3)$$

In economics terms, the overall effect of the treatment plan on the outcome happens to be the same as the effect on impact, though in more general settings this will not generally be the case. It is also useful to notice that since the effect on impact is γ and there are no internal propagation dynamics, the multiplier is simply the sum of the treatments over time, scaled by their per-period impact γ .

⁶They can also be estimated on the levels, y_{t+h} . However, this is not generally recommended even though the response on the levels and the long-differences coincide when y_{t-1} is included in the RHS. The reason is that when y_{t+h} is I(1), omitting y_{t-1} (as sometimes happens) can lead to invalid estimates and /or inference.

The LP estimator for $\mathcal{R}_{sy}(h)$ can be obtained from $y_{t+h} = \beta_h s_t + v_{t+h}^y$ and hence a direct estimate of $\sum_{j=0}^h \mathcal{R}_{sy}(j)$ can be obtained from the modified local projection $Y_{t+h} = \theta_h^y s_t + v_{t+h}^y$ where $Y_{t+h} \equiv y_{t+h} + \dots + y_t$. Clearly $\theta_h^y = \beta_0^y + \dots + \beta_h^y = \gamma(1 + \rho + \dots + \rho^h)$. One can similarly construct $S_{t+h} = \theta_h^s s_t + v_{t+h}^s$ and therefore obtain $m_h = \theta_h^y / \theta_h^s$. However, one can go one step further by noting that if an instrument z_t is available such that $E(z_t, u_t^j) = 0$ for $j = y, s$, then:

$$\begin{cases} \text{cov}(Y_{t+h}, z_t) &= \theta_h^y \text{cov}(s_t, z_t) \\ \text{cov}(S_{t+h}, z_t) &= \theta_h^s \text{cov}(s_t, z_t) \end{cases} \implies m_h = \frac{\theta_h^y}{\theta_h^s} = \frac{\text{cov}(Y_{t+h}, z_t)}{\text{cov}(S_{t+h}, z_t)},$$

which can be directly estimated from the auxiliary LPIV (LP estimated with instrumental variables):

$$Y_{t+h} = m_h S_{t+h} + v_{t+h}, \quad (4)$$

estimated using z_t as an instrumental variable. This is the approach proposed in [Ramey \(2016\)](#). The advantage of using this direct approach is that standard errors can be directly obtained from the regression output. Note that estimating this local projection by OLS would not generate valid estimates even if S_{t+h} were completely assigned at random. In general, of course, we would include a vector of controls x_t in the previous expression and use more than one instrument if additional instruments are available. [Ramey \(2016\)](#) provides a more complete discussion.

4. INFERENCE

As [Equation 2](#) shows, the residuals of a local projection generally have a moving average structure. Because they are dated t to $t + h$, they do not affect the consistency of the local projection estimate, $\hat{\beta}_{jh}$. However, the residual serial correlation affects the construction of standard errors.

A semi-parametric solution offered by [Jordà \(2005\)](#) was to use a Newey-West heteroscedasticity and autocorrelation consistent (HAC) estimator. Though simple to use, several, more efficient alternatives have been proposed in the literature that are worth reviewing. Perhaps one of the more elegant solutions has been proposed by [Montiel Olea & Plagborg-Møller \(2021\)](#) and consists of adding an additional lag to the LP. Lag-augmentation is known to improve inference in autoregressive models (see [Toda & Yamamoto, 1995](#); [Dolado & Lütkepohl, 1996](#); [Inoue & Kilian, 2020](#)). A simple univariate example helps illustrate the main idea behind lag augmentation, though the method is shown to work

with a generic VAR(p) data generating process.

Thus, suppose the data are generated by a simple AR(1) model such as $w_t = aw_{t-1} + \epsilon_t$. For convenience, we may assume that w_t is strictly stationary with $|a| < 1$ and $\epsilon_t \sim D(0, \sigma^2)$. Consider estimating the local projection $w_{t+h} = \beta_h w_t + v_{t+h}$. Plugging in the AR(1) into the local projection results in the expression $w_{t+h} = \beta_h \epsilon_t + \gamma_h w_{t-1} + v_{t+h}$.

Clearly ϵ_t is not directly observable. However, we can use the Frisch-Waugh-Lovell logic to obtain β_h by regressing $(w_{t+h} - \gamma_h w_{t-1})$ on $(w_t - aw_{t-1})$. The estimator from this auxiliary two step regression is such that:

$$\hat{\beta}_h = \beta_h + \frac{\sum_{t=1}^{T-h} v_{t+h} \epsilon_t}{\sum_{t=1}^{T-h} \epsilon_t^2} \rightarrow \hat{\sigma}^2(\hat{\beta}_h) = \frac{\sum_{t=1}^{T-h} \hat{v}_{t+h}^2 \hat{\epsilon}_t^2}{(\sum_{t=1}^{T-h} \hat{\epsilon}_t^2)^2}$$

The reason this approach works is that under the assumptions made on ϵ_t , the term $v_{t+h} \epsilon_t$ is serially uncorrelated even if v_{t+h} itself is serially correlated. This feature comes from the assumption that ϵ_t is strictly stationary with $E(\epsilon_t | \{\epsilon_s\}_{s \neq t}) = 0$.⁷ As a result, a simple way to obtain correct inference for the local projection is to add an additional lag as a regressor and then select a heteroscedasticity robust estimator to compute the standard errors—there is no longer a need to correct for serial correlation.⁸ In the same paper, [Montiel Olea & Plagborg-Møller \(2021\)](#) propose a parametric wild bootstrap procedure where data are simulated from a VAR and then local projections are fitted to the simulated data to construct percentile t-confidence intervals.

A second option is to use a parametric specification of the residual covariance matrix. For example, [Lusompa \(2021\)](#) provides a simple FGLS⁹ procedure that takes advantage of previous local projection stages to correct the h^{th} stage residuals. Specifically, the idea is to estimate the first local projection (i.e., for $h = 0$) as usual and collect for use in subsequent stages, the residuals $\{\hat{\epsilon}_t\}$ and the estimate of the impulse response coefficient, say $\hat{\beta}_0$. For $h = 1$ construct the left-hand side variable $\tilde{y}_{t+1} = y_{t+1} - \hat{\beta}_0 \hat{\epsilon}_t$ and obtain $\hat{\beta}_1$ from the local projection based on \tilde{y}_{t+1} . For $h = 2$, construct the left-hand side variable as $\tilde{y}_{t+2} = y_{t+2} - (\hat{\beta}_0 \hat{\epsilon}_{t+1} + \hat{\beta}_1 \hat{\epsilon}_t)$. Similar adjustments to the left-hand side variable are applied with subsequent horizons.

[Lusompa \(2021\)](#) shows that it is not necessary for the DGP to be a VAR for this procedure to correct for residual serial correlation (as long as the data are strictly stationary). Monte

⁷In practical settings, it will be important to ensure that enough lags are included to ensure that this condition is met.

⁸For example, in STATA, one would simply use the command `regress f'h'.w w l(1/'p').w, vce(robust)`, where 'h' is a local that controls the impulse response horizon and 'p' is a local for the lag length. Other heteroscedasticity robust alternatives provided in STATA, such as `vce(hc2)` and `vce(hc3)`, may be preferred.

⁹Feasible Generalized Least Squares.

Carlo evidence in his paper shows that FGLS generates considerable gains in efficiency, specially when the data are highly persistent. Moreover, [Lusompa \(2021\)](#) also provides a bootstrap version using the score wild bootstrap (see [Kline & Santos, 2012](#)) and a version for structural multi-step inference. Below I set-up the GMM version of the local projection estimator, which will make the underpinnings of this procedure perhaps easier to understand.

Recent work by [Xu \(2023\)](#) shows that in settings where the true lag order is unknown and possibly infinite, LPs are semiparametrically efficient as long as controlled lags are allowed to grow with the sample size. This means that the efficiency loss relative to VARs diminishes the more lags one includes, and it effectively vanishes in the limit. The paper then proposes two robust methods of inference.

Yet a fourth option consists on shrinking the variation of the local projection coefficients. By adding some mild constraints, one can make considerable efficiency improvements yet retain much of the flexibility of local projections. A VAR does this automatically, with LPs this can be done in a variety of ways (see, e.g. [Barnichon & Brownlees, 2019](#); [Barnichon & Matthes, 2018](#); [Miranda-Agrippino & Ricco, 2021](#)).

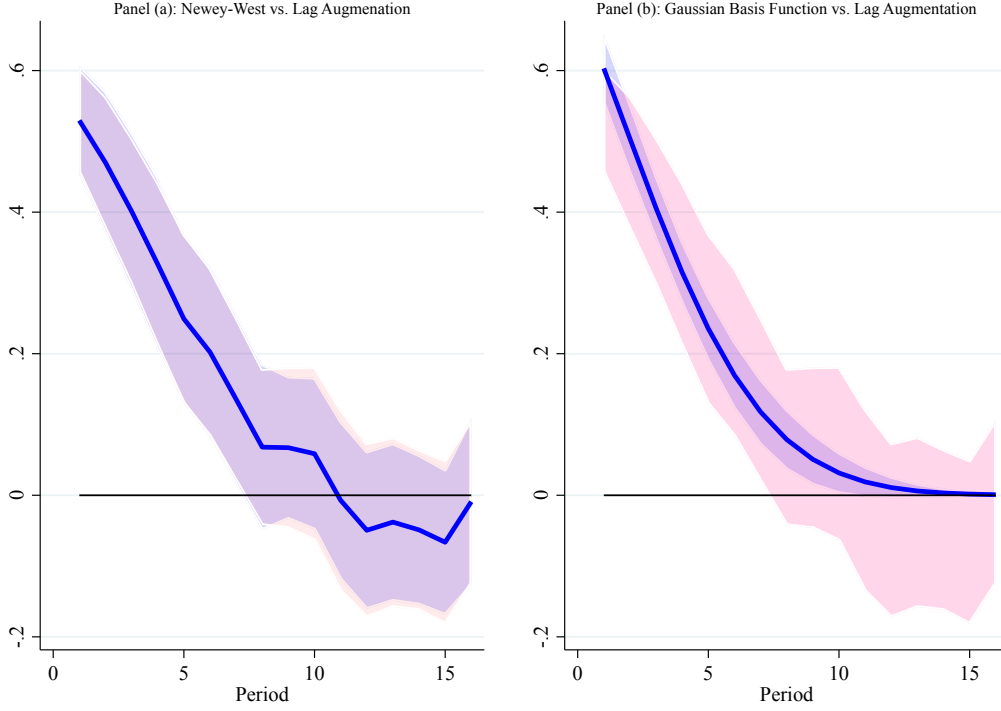
As an illustration, panel (a) of [Figure 1](#) compares the error bands computed with Newey-West versus lag augmentation using simulated data. Panel (b) fits a Gaussian Basis Function instead (such as the one proposed in [Barnichon & Matthes, 2018](#)), and shows error bands constructed using a direct GMM estimation with Newey-West robust standard errors. Panel (a) shows that, for this example, Newey-West or lag augmentation generate very similar (nearly indistinguishable) bands, as the theory predicts. Panel (b) shows that smoothing the LP responses can generate considerable reductions in uncertainty.

Several bootstrap methods have been proposed in the literature. The basic idea is as follows. First, estimate a VAR and generate bootstrap replicates of the data with it. Second, estimate LPs on these bootstrap replicates. The bootstrap sample of LPs can be used to construct inference. The procedure can be paired with a Wild bootstrap to correct for potential heteroscedasticity. The reader should consult [Montiel-Olea & Plagborg-Møller \(2019\)](#); [Montiel Olea & Plagborg-Møller \(2021\)](#) for a detailed presentation of the procedures.

5. JOINT ESTIMATION WITH GMM

A useful way to think about estimation of local projections is by using the generalized method of moments (or GMM), which then naturally accommodates IV estimation. Let y_{t+h} be an outcome variable observed at time $t+h$; let s_t be a treatment/intervention/policy variable whose effect on the outcome at some point in the future we are interested in

Figure 1: Comparing error bands



Notes: Local projection of the response of x to y in the system:

$$\begin{pmatrix} y_t \\ x_t \end{pmatrix} = \begin{pmatrix} 0.7 & 0.2 \\ 0.2 & 0.7 \end{pmatrix} + \begin{pmatrix} u_{yt} + 0.8u_{xt} \\ u_{xt} \end{pmatrix}; \quad u_{yt}, u_{xt} \sim N(0, 1).$$

Panel(a) compares error bands computed by Newey-West (6 lags) and lag augmentation. Panel (b) compares the error bands from panel (a) to a fitted Gaussian Basis Function estimated by GMM with Newey-West robust standard errors. See text.

characterizing. Let x_t refer to a $1 \times k$ vector of exogenous and pre-determined variables that include lags of the outcome and the treatment variable. Let z_t denote a $1 \times l$ vector of instruments for s_t , which naturally include x_t . When no instruments are available, then $z_t = x_t$, as one would have in a situation where identification is achieved by conditioning on a rich set of right-hand side variables via regression control.

Then, the h^{th} local projection in a linear model satisfies the moment condition:

$$E[g(\mathbf{w}_t; \beta_h)] = E[(y_{t+h} - \beta_h s_t) z_t] = 0; \quad \text{for } h = 0, 1, \dots, H$$

Stacking the left-hand side variables into the $(H + 1) \times 1$ vector $Y_t(H) = (y_t, y_{t+1}, \dots, y_{t+H})'$, the $(H + 1) \times 1$ vector of impulse response coefficients $\beta = (\beta_0, \beta_1, \dots, \beta_H)'$ can be esti-

mated as the solution to the GMM objective function:

$$\begin{aligned} & \max_{\beta} \left(\frac{1}{T-H} \sum_{t=1}^{T-H} \mathbf{g}(w_t; \beta) \right)' W_t \left(\frac{1}{T-H} \sum_{t=1}^{T-H} \mathbf{g}(w_t; \beta) \right) \\ & \max_{\beta} \left(\frac{1}{T-H} \sum_{t=1}^{T-H} (Y_t(H) - \beta s_t) \mathbf{z}_t \right)' W_t \left(\frac{1}{T-H} \sum_{t=1}^{T-H} (Y_t(H) - \beta s_t) \mathbf{z}_t \right), \end{aligned} \quad (5)$$

where, in the overidentified case, it is common to use the Newey-West version of the optimal weighting matrix W_t :

$$\begin{aligned} \hat{W}_t &= \hat{\Gamma}_0 + \sum_{v=1}^q \left[1 - \frac{v}{q+1} \right] (\hat{\Gamma}_v + \hat{\Gamma}'_v) \\ \hat{\Gamma}_v &= \frac{1}{T-H} \sum_{t=v+1}^{T-H} \mathbf{g}(w_t; \hat{\beta}) \mathbf{g}(w_{t-v}; \hat{\beta})', \end{aligned}$$

but one could take advantage of the known structure of the residual correlation in a local projection using, for example, the continuously updated estimator of [Hansen, Heaton & Yaron \(1996\)](#). Importantly, under standard regularity assumptions, estimation with [Equation 5](#) delivers an estimate of the covariance matrix for β , say Σ_{β} , which will turn out to have important uses to conduct simultaneous inference, as I will show next. Panel (b) of [Figure 1](#) combines the GMM expressions just presented and assumes that the coefficients of the impulse response (the β in the previous expression) can be well approximated by a Gaussian Basis Function (which only depends on 3 parameters) as in [Barnichon & Matthes \(2018\)](#).

Of course, we do not need to be limited by linearity and later I explore some natural nonlinear extensions, but then care must be observed in interpreting the local projection. A simplified example illustrates how this should be done in a nonlinear setting:

$$y_{t+h} = \alpha_h + \beta_h s_t + \gamma_h s_t^2 + \epsilon_{t+h},$$

then note that the impulse response is no longer unique: it will depend on the values of the benchmark (say, $s_t = s_0$) and the treatment (say, $s_t = s_1 = s_0 + \delta$). That is:

$$\mathcal{R}(h)[s_0, \delta] = (\beta_h s_1 + \gamma_h s_1^2) - (\beta_h s_0 + \gamma_h s_0^2) = \beta_h \delta + \underbrace{\gamma_h \delta^2 + \gamma_h s_0 \delta}_{\text{nonlinear terms}}$$

In this and in many alternative nonlinear specifications (some that I discuss below), local projections remain linear in parameters so that the GMM objective function can be easily

set up and estimated.

6. JOINT INFERENCE AND SIGNIFICANCE BANDS

Impulse response plots typically include error bands around the response estimates to provide a measure of estimation uncertainty. However, they are often misused to make inferential statements about the shape of the impulse response. This is problematic because impulse response coefficients are correlated with one another, as [Jordà \(2009\)](#) pointed out. The problem is like when one uses individual t -ratios instead of a χ^2 - or F -tests to do a joint hypothesis test in linear regression with correlated regressors. This section tackles these issues by building on the inferential methods presented earlier and building appropriate simultaneous inference bands. Ultimately we want to display error bands that allow us to produce valid inferential statements under a variety of scenarios.

6.1. Simultaneous inference

Asymptotically and quite generally, we may assume that a vector of impulse responses estimates $\beta = (\beta_0, \beta_1, \dots, \beta_H)'$ is such that $\hat{\beta} \rightarrow \mathcal{N}(\beta, \Sigma_\beta)$. The joint null hypothesis $H_0 : \beta = \mathbf{0}$ could be tested with the traditional Wald statistic based on the Mahalanobis distance ([Mahalanobis, 1936](#)), which turns out to be the sum of the square of the t -ratios when standardizing β by Σ_β . This Wald statistic will have an asymptotic χ^2 distribution with critical value $d(H, \alpha)$. [Jordà \(2009\)](#) then proposed constructing the individual critical values for the confidence interval of each β_h by using Scheffé's S-method (see [Scheffé, 1953](#)), which in this example turns out to be $\sqrt{d(H, \alpha)/H}$. That is, Scheffé's S-method leads to more conservative error bands, but which have the correct coverage for any hypothesis test of the impulse response that can be expressed in linear form (such as joint significance).

However, [Montiel-Olea & Plagborg-Møller \(2019\)](#) provide a more elegant solution. The idea is to provide bounds that can accommodate a variety of hypotheses of interest while providing the desired nominal coverage, say with at least probability $1 - \alpha$. The idea is to construct an interval for each element in the response vector such that, in the worst case scenario, the null hypothesis of the element that is farthest from the estimate will still have desired nominal coverage $1 - \alpha$. This is called the *sup-t* procedure and [Montiel-Olea & Plagborg-Møller \(2019\)](#) show that it provides tighter bounds than the Scheffé S-method.

Here is how it works. Suppose as before that the estimates of an impulse response of interest are such that $\hat{\beta} \rightarrow \mathcal{N}(\beta, \Sigma_\beta)$. This asymptotic argument can be justified under a variety of rather general assumptions that apply to most situations observed in practice. Hence define the auxiliary vector $\eta = (\eta_1, \dots, \eta_H)' \sim \mathcal{N}(\mathbf{0}, \Sigma_\beta)$ with $\sigma_h = \Sigma_{[h,h]}$. The idea

is to find the smallest critical value c such that for the collection of intervals around the response estimates:

$$P\left(\bigcap_{h=1}^H [\beta_h \in \hat{\beta}_h \pm c \hat{\sigma}_h]\right) \rightarrow P\left(\max_h |\sigma_h \eta_h| \leq c\right).$$

Alas, there are no tabulated values for the distribution of the maximum element of a normally distributed vector (the right-hand side of the previous expression) so that critical values have to be constructed via Monte Carlo simulation as:

$$c = q_{1-\alpha}(\Sigma) \equiv q_{1-\alpha}\left(\max_h |\sigma_h^{-1} \eta_h|\right).$$

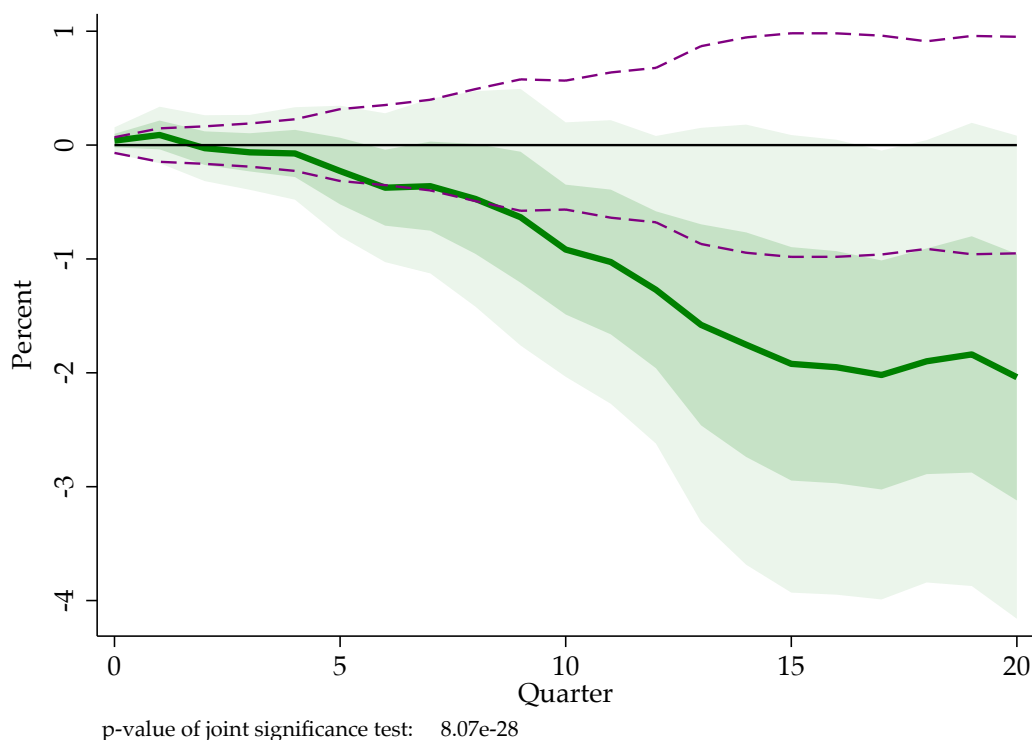
Based on this principle, [Montiel-Olea & Plagborg-Møller \(2019\)](#) in addition provide bootstrap and Bayesian methods. The main advantage of constructing error bands in this manner is that inference on a subset of impulse response coefficients (e.g. are coefficients for horizons 3 to 6 different from zero?), will be correct. Of course, this comes at the cost of more conservative bands.

6.2. Significance

In many applications, it is common to see an impulse response with error bands that straddle the zero line. Many authors therefore conclude that the response is not significant even though in many of these situations the response is uniformly positive (or negative). An example is provided in [Figure 2](#). The figure shows the response of 100 times the log consumer price index (CPI) in the U.S. to a [Romer & Romer \(2004\)](#) shock over the sample: 1969:Q1–2007:Q4. The specification includes 4 lags of CPI inflation, real GDP growth, the federal funds rate, and the Romer and Romer shock itself.

The impulse response displayed in [Figure 2](#) is typical of many applications. It shows a time profile that, is zero for about one-year and is negative over the remaining 4-years. The point-wise error bands (shown at 95% confidence level) straddle the zero line thus leading many researchers to conclude that the impulse response is not significant. However, as the figure shows, a joint test of the null that all the response coefficients is zero can be easily rejected (with a p-value of 8.07e-28). To make the point clearer, [Figure 2](#) also displays two dashed lines. These are calculated by inverting the statistic of the null that all impulse response coefficients are zero. That is, I display approximate 95% *significance bands* constructed as $\pm \hat{\sigma}_h \sqrt{d(H, \alpha) / H}$ since under the null the coefficient estimates are approximately uncorrelated. Note that in the figure, for the about first 2-years, the impulse

Figure 2: Response of Inflation to a Romer and Romer monetary shock



Notes: Local projection of the cumulative change of the consumer price index (CPI) on four lags of CPI inflation, four lags of real GDP growth, and four lags of the federal funds rate. The intervention is a [Romer & Romer \(2004\)](#) shock. Sample: 1969Q1-2007Q4. Shaded area: two standard deviation pointwise confidence bands using heteroscedasticity robust standard errors. Dashed lines computed by inverting the F-statistic around zero using Scheffé’s method. See text.

response is largely within these significance bands, but clearly strays outside thereafter, thus confirming the result of the p-value (8.07e-28) reported for the joint test of significance.

Economically, the impulse response displayed shows that the CPI inflation is about 2 percentage points lower after 5-years or a decline of CPI inflation of about 0.4% on average over the 5-years—a non-negligible effect in economic terms even if individual response coefficients are imprecisely estimated.

What explains this disparity? As explained earlier, impulse response coefficients are highly correlated. Like regressions with near-collinearity, individual t-statistics are not significant, but a joint test of significance overwhelmingly rejects the null. A good practice is therefore to report the joint test, which more closely corresponds to the scientific test of the hypothesis that the intervention has no effect on the outcome.

7. IDENTIFICATION

In a typical local projection of the form:

$$y_{t+h} = \alpha_h + \beta_h s_t + \gamma_h x_t + v_{t+h}; \quad h = 0, 1, \dots, H$$

with x_t containing exogenous and pre-determined variables, OLS estimates will be consistent as long as variation in s_t is exogenous given x_t . For example, the Cholesky identification assumption common in the VAR literature amounts to including the contemporaneous values of the system variables causally ordered first in x_t . However, since the goal is to ensure that variation in s_t is as good as if it were exogenous, it seems that the safest route in general would be to include all available information to ensure orthogonality of s_t , regardless of the position of s_t in the causal order.

Similarly, identification with other methods common in the VAR literature (such as long-run identification restrictions, or sign-based identification, for example) can be easily incorporated as shown in [Plagborg-Møller & Wolf \(2021\)](#). I refer the reader to their paper for more details.

As previewed in the introduction, one of the strong points of the policy evaluation literature is the emphasis on causation and hence on providing additional ways to approach identification. Expanding the idea behind regression control, I discuss in Section 8 inverse propensity score weighting, where control for x_t is allowed to be semi-parametric (see, e.g. [Hirano, Imbens & Ridder, 2003](#); [Angrist, Jordà & Kuersteiner, 2018](#); [Jordà & Taylor, 2016](#)) based on ideas first discussed in [Horvitz & Thompson \(1952\)](#).

However, perhaps the more typical approach to identification in regression is the use of instrumental variables, which can control for endogeneity. I have sprinkled references to identification with instrumental variables at several points in the previous sections, in particular when discussing how to estimate local projections using GMM in Section 5. That said, it is useful to state formal conditions for when this approach is appropriate.

Specifically, denote the vector of instruments z_t for the intervention variable s_t . Further denote $z_t^P = z_t - \mathcal{P}(z_t|x_t)$ and similarly $s_t^P = s_t - \mathcal{P}(s_t|x_t)$ where $\mathcal{P}(w|v)$ means the projection of w onto v . The first condition is that the instruments must be relevant, that is:

- Relevance: $E(s_t^P, z_t^{P'}) \neq \mathbf{0}$.

Next, we need the instruments to be exogenous. The exogeneity condition in a local projections setting is slightly different than usual due to the dynamic structure of the problem. It can be stated as:

- Lead-lag exogeneity: $E(v_{t+h}, z_t^{P'}) = 0$ for all h .

Stock & Watson (2018) and Plagborg-Møller & Wolf (2021) discuss these conditions in greater detail and provide more formal statements though the main thrust of what is needed for IV estimation is summarized by the relevance and lead-lag exogeneity conditions just presented. Just like one can show the equivalence between VAR and LP responses, one can also show the equivalence of SVAR-IV and LPIV (see, e.g. Mertens & Montiel-Olea, 2018).

I conclude this section with a brief statement about an advantage of local projections over VARs highlighted by these authors. It consists on noting that, although invertibility is necessary for proxy-VARs (as VARs identified using instrumental variables are typically referred to), this condition is not required for local projections. Invertibility essentially means that the structural residuals can be recovered from the reduced form residuals. The condition usually fails when the span of the reduced-form residuals is smaller than the span of the structural shocks, for example, as is common of models with news about future shocks.

8. THE DYNAMIC AND STATIC EFFECTS OF A POLICY INTERVENTION

In order to draw a closer link to the policy evaluation literature, I draw from variations of a simple model involving an outcome and a binary intervention or treatment. Suppose that y is an outcome variable of interest and s is a latent variable that determines policy/treatment/intervention according to $I(s_t) = I_t \in \{0, 1\}$. I leave the rule implicit in I_t undefined for the moment, though a simple example would be $I_t = I(s_t > c)$ for some c , as is common when estimating a logit or probit model. In some settings, I take s to be directly observable. In such cases, clearly $s \neq 0$ can be directly interpreted as the dose given to a treated unit. Further, suppose that:

$$\begin{cases} y_t &= \beta I_t + \rho_{yy} y_{t-1} + u_t^y \\ s_t &= \rho_{sy} y_{t-1} + \rho_{ss} s_{t-1} + u_t^s \end{cases}; \quad u_t \sim D \left(\begin{pmatrix} 0 \\ 0 \end{pmatrix}; \begin{pmatrix} \sigma_y & 0 \\ 0 & \sigma_s \end{pmatrix} \right). \quad (6)$$

This expression has several useful features. First, it is written in structural form. The residuals u_t^y and u_t^s are orthogonal to each other (explaining the switch from the ϵ_t to the u_t notation). Second, the outcome variable and the policy variable allow for possible internal propagation dynamics. Third, interventions can be thought of as randomly assigned when $\rho_{sy} = 0$. When $\rho_{sy} \neq 0$, interventions are endogenously determined by previous outcome values. Several interesting cases can be studied using this simple model.

1. No serial correlation. If $\rho_{ij} = 0$ for $i, j = s, y$, there are no internal propagation dynamics. A sample of $t = 1, \dots, T$ observations behaves like a cross section. Hence, the

effect of an intervention is β on impact, and zero thereafter. This effect can be estimated as we would in a cross-section, that is, by taking the following difference in sample means:

$$\mathcal{R}_{Iy}(0) = \frac{1}{T_1} \sum_{t=1}^T y_t I_t - \frac{1}{T_0} \sum_{t=1}^T y_t (1 - I_t); \quad T_1 = \sum_{t=1}^T I_t; \quad T = T_0 + T_1; \quad I_t \in \{0, 1\}. \quad (7)$$

Of course, this could be simply estimated with the local projection consisting of regressing y_t on I_t . The estimate of the constant term would be the mean for the untreated units and the coefficient on I_t would be the effect of the intervention, β . It is easy to recognize from these two expressions the parallels with how one would estimate the treatment effect in a randomized controlled trial (RCT).

Using the potential outcomes notation, one would conjecture that the observed data come from a mixture distribution of two unobserved latent variables, $y_t(1)$ for observations in the “treated” subpopulation, and $y_t(0)$ for the “control” subpopulation. Specifically, the observed data are $y_t = y_t(1)I_t + y_t(0)(1 - I_t)$. Since $y_t(j)$ for $j = 0, 1$ are not directly observable for each element of the sample, a quantity of interest is usually the average treatment effect, defined as $\tau(0) = E[y_t(1) - y_t(0)]$, which under random assignment can be directly estimated with [Equation 7](#).

2. Serial correlation in the outcome. Next, suppose that $\rho_{yy} = \rho \neq 0$, but $\rho_{sy} = \rho_{ss} = 0$. In that case $\mathcal{R}_{Iy} = (\beta, \beta\rho, \dots, \beta\rho^h, \dots)'$. That is, the intervention β is propagated by the internal dynamics of the outcome, but the assignment of the intervention I_t is still random. In principle, we can use the same difference in means as in the previous expression. However, to improve the efficiency of the estimator, we would want to take advantage of regressing the outcome on y_{t-1} first since, in general:

$$\begin{aligned} y_{t+h} &= \rho^h \beta I_t + \rho^{h+1} y_{t-1} + v_{t+h} \\ v_{t+h} &= u_{t+h}^y + \rho u_{t+h-1}^y + \dots + \rho^h u_t^y + \\ &\quad \underbrace{\beta I_{t+h} + \rho \beta I_{t+h-1} + \dots + \rho^{h-1} \beta I_{t+1}}_{\text{future interventions}}, \end{aligned}$$

which is just the local projection of y_{t+h} on I_t and y_{t-1} . The residuals contain terms associated with future interventions or shocks. Under our assumptions, these are as if randomly assigned so they do not cause an inconsistency with the local projection estimate of $\rho^h \beta$. However, if the I_{t+h} are observable (and under the maintained assumptions for this example), nothing prevents one from including them as regressors (by construction they

are uncorrelated with the u_{t+j}^y for any j) so that the local projection that one would estimate becomes:

$$y_{t+h} = a_0 I_{t+h} + a_1 I_{t+h-1} + \dots + a_h I_t + c_h y_{t-1} + v_{t+h}; \quad v_{t+h} \sim MA(h),$$

with $a_j = \rho^j \beta$ for $j = 0, \dots, h$ and $c_h = \rho^{h+1}$ and where I use the short-hand notation $MA(h)$ to indicate that the residuals have a moving-average structure of order h . In this case, we can therefore estimate the impulse response with a single local projection set for the desired length, that is $\hat{\mathcal{R}}_{Iy} = (\hat{a}_0, \dots, \hat{a}_h)'$.

How would one approach estimating the average treatment effect in similar fashion to [Equation 7](#)? Note that for this example, one would be interested in $\tau(h) = E[y_{t+h}(1) - y_{t+h}(0) | \Lambda_{t+h}]$ where $\Lambda_{t+h} = I_{t+h}, \dots, I_{t+1}; y_{t-1}$ and based on our example, y_{t-1} is a summary statistic for the effects of previous interventions. Conditioning on future treatments isolates the effect of the current treatment. Thus, let $y_{t+h|\Lambda}$ denote the value of y_{t+h} conditional on Λ_{t+h} (say from a regression of y_{t+h} on Λ_{t+h}), then an alternative estimate of the impulse response is:

$$\mathcal{R}_{Iy}(h) = \frac{1}{N_1} \sum_{t=1}^N y_{t+h|\Lambda} I_t - \frac{1}{N_0} \sum_{t=1}^N y_{t+h|\Lambda} (1 - I_t) = \beta \rho^h; \quad N = T - h, \quad N_1 = \sum_{t=1}^N I_t,$$

and $N = N_0 + N_1$. In a moment, the usefulness of this derivation will become apparent.

3. Serially correlated interventions Suppose that $\rho_{ss} = \rho \neq 0$ but $\rho_{yy} = \rho_{sy} = 0$. In this case interventions are serially correlated, but still randomly assigned. When a unit receives an intervention, it is likely that it will receive interventions in the next few periods since $I_{t+h} = I(\rho^h s_t + u_{t+h}^s + \rho u_{t+h-1}^s + \dots + \rho^{h-1} u_t^s)$. Interventions are still as if they were randomly assigned, however the usual local projection in this case would include past values of the intervention as a right hand side variable. That is:

$$y_{t+h} = \beta_h I_t + \rho_h I_{t-1} + v_{t+h}; \quad v_{t+h} \sim MA(h); \quad \hat{\mathcal{R}}_{Iy}(h) = \hat{\beta}_h.$$

In light of the previous example, it is natural to ask why would one not be also including future values of the intervention as regressors as is done in the definition of Λ_{t+h} . Recent papers from the difference-in-differences literature argue that local projections estimate the wrong object for this reason (see e.g. [De Chaisemartin & D'Haultfoeuille, 2022](#)). However, this is just a confusion about the object of interest. In a typical impulse response, the effect of the intervention accommodates the possibility that future interventions will be subsequently administered with some probability, as is the case when s_t is serially correlated. That is, the

usual “macroeconomics” response answers the question, if there is an intervention at time t , what is the likely effect on the outcome, recognizing that the intervention itself generates subsequent interventions. This is the effect we most likely see in the data. However, conditioning on future interventions is also valid but answers a different question, that of the effect of a one-off intervention.

[De Chaisemartin & D’Haultfoeuille \(2022\)](#) and others are interested in the effect of the intervention in isolation of any subsequent potential intervention. This is an equally legitimate question to ask. And here once again, we can make a connection to a literature in applied macroeconomics that studies the fiscal multiplier (see, e.g. [Mountford & Uhlig, 2009](#); [Ramey, 2016](#); [Ramey & Zubairy, 2018](#)) as I will show.

That said, a key observation is worth noting. In panel data settings where treatment effects may be heterogenous across units, the difference between these two approaches matters. In a traditional time series setting, an implicit yet critical assumption is that the effect of subsequent treatments is homogenous, that is, the specific time that treatment is administered does not alter the treatment effect, all else equal. In the burgeoning literature on difference-in-differences (DiD) estimation (see [Roth, Sant’Anna, Bilinski & Poe, 2022](#), for an overview), it is becoming standard to assume that treatment is heterogenous. I will return to this issue below.

By the same token, an issue often overlooked in the DiD literature is the role of expectations. That is, in a setting where agents expect interventions to follow after the initial (and possibly randomly assigned) intervention, their behavior will take into account such an eventuality. Thus, conditioning on past information and on future treatments will not completely account for the effect of expectations except in situations where agents are completely backward looking, for example. It seems safer to instead adopt the standard macroeconomic practice of reporting the impulse response without removing the effect of future interventions and instead focus on measuring multiplier effects as discussed earlier.

Summarizing, when interventions are serially correlated, an intervention today will likely be followed by subsequent interventions. The traditional impulse response measures the effect on the outcome of the entire *intervention plan*, that is, the intervention implemented today and the set of subsequent interventions expected to follow due to serial correlation. This is the effect we are likely to see in the data. Thus a practitioner may well be interested in calculating a multiplier consisting of the sum total of the effect of the intervention plan on the outcome over some horizon, divided by the sum total of the interventions over that same horizon, as is done in the calculation of m_h as is done in [section 3](#).

The policy evaluation literature tends to simply focus on the effect of the initial intervention by sterilizing the effect of subsequent interventions. In our example, this is

equivalent to the multiplier (though in richer settings this will not be exactly the same). Note that the impulse response can also be thought of as the interaction of the one-time intervention effect scaled by the serial correlation pattern in the intervention plan. In practice, the role of expectations is often ignored, which can make sterilization based on future interventions insufficient, and the estimates therefore invalid—it is a trivial violation of the no anticipation assumption common in DiD studies.

4. Endogenous assignment This final example will allow us to briefly discuss inverse propensity score (IPW) estimators based on some conditional ignorability assumption (to be stated momentarily), often found in applied microeconomics research. Suppose that the coefficient on y_{t-1} in the equation for s_t is non-zero, that is, $\rho_{sy} = \rho \neq 0$. For simplicity assume that $\rho_{yy} = \rho_{ss} = 0$.

In the general case where the parameters of [Equation 6](#) are unrestricted, the impulse response can be calculated several ways. First notice that if $\rho_{sy} \neq 0$ then assignment is no longer random. It is determined by past values of the outcome. However, owing to the structure of the problem, assignment is as if it were random if one linearly controls for y_{t-1} . Hence, the response $\mathcal{R}_{Iy}(h)$ can be calculated with a typical local projection of y_{t+h} on I_t , and y_{t-1} . Alternatively, one can first regress y_{t+h} on y_{t-1} and then use the residuals from this regression, call them, $y_{t+h|t-1}$ to compute the difference in means:

$$\mathcal{R}(h) = \frac{1}{N_1} \sum_{t=1}^N y_{t+h|t-1} I_t + \frac{1}{N_0} \sum_{t=1}^N y_{t+h|t-1} (1 - I_t),$$

where N , N_0 and N_1 have been defined before.

Yet a third alternative is to use inverse propensity score weighting. In situations where the experimenter is willing to assume that, conditional on observables, assignment is as good as if it were random, they may not be willing to assume that the relationship is linear. What is the experimenter to do? Here I follow two recent macroeconomic applications, [Jordà & Taylor \(2016\)](#) and [Angrist et al. \(2018\)](#).

Let $\hat{p}_t = p(I_t = 1 | \mathcal{I}_t)$ denote the propensity score where \mathcal{I}_t refers to information available up to t (or in the example, simply y_{t-1}). [Angrist et al. \(2018\)](#) propose a conditional independence, or selection on observables assumption so that: $y_{t+h}(i) \perp I_t | y_{t-1}$ for $i = 0, 1$ where $y_{t+h}(i)$ denote potential outcomes. The assumption basically says that, conditional on y_{t-1} , assignment to treatment is not influenced by the potential outcomes one may experience. However, by properties of the propensity score, this assumption can be rewritten as: $y_{t+h}(i) \perp I_t | \hat{p}_t$. Using the results in [Hirano et al. \(2003\)](#), then [Jordà & Taylor \(2016\)](#) and

[Angrist et al. \(2018\)](#) show that a *doubly robust* estimate of the impulse response is:

$$\mathcal{R}_{Iy}(h) = \frac{1}{N_1} \sum_{t=1}^N y_{t+h|t-1} \frac{I_t}{\hat{p}_t} + \frac{1}{N_0} \sum_{t=1}^N y_{t+h|t-1} \frac{(1 - I_t)}{1 - \hat{p}_t},$$

where N , N_0 and N_1 have been defined before. The doubly robust feature is reflected on the fact that the notation $y_{t+h|t-1}$ indicates a regression of the outcome on past information. That is, one controls via regression and via the propensity score. In practice, there are more efficient ways of estimating the model using doubly-robust, inverse propensity score weighting. Importantly, standard errors should be adjusted for the first stage estimation uncertainty in \hat{p}_t . Of course, this could be done with, for example, a paired bootstrap.

9. THE KITAGAWA DECOMPOSITION

In the previous examples, treatment/intervention is conveniently assigned at random, a situation rarely encountered in practice with observational data. With random assignment, covariates provide tighter, more efficient estimates of the treatment effect, but otherwise, whether they are included or not has no effect on bias. However, this view assumes that the influence of the covariates on the outcome remains impervious to treatment. This is implicitly assumed in a VAR. What if this assumption is wrong? What if the manner in which a covariate interacts with the outcome depends on whether treatment is administered or not?

In applied microeconomics, one can account for how covariates and treatment interact using a decomposition first proposed by the sociologist Evelyn Kitagawa ([Kitagawa, 1955](#)) and introduced to economics by [Oaxaca \(1973\)](#) and [Blinder \(1973\)](#). An extensive review of this decomposition is provided in [Fortin, Lemieux & Firpo \(2011\)](#). I hence refer to this as the Kitagawa decomposition. It turns out that the Kitagawa decomposition provides a natural way for thinking about how to stratify local projections and even estimate time-varying local projections while still using simple regression analysis. The results that I present next are based on [Cloyne, Jordà & Taylor \(2023\)](#).

Let me start with a simple cross-sectional setting first, with as stripped down a notation as possible. Without loss of generality, one can write $y(j) = \mu_j + v_j$ for $j = 0, 1$, the two potential outcomes (1 for treated, 0 for control), and where $E(v_j) = 0$. Covariates introduce heterogeneity. A simple way to model this heterogeneity is by assuming that $v_j = (\mathbf{x} - E(\mathbf{x}))\gamma_j + \epsilon_j$, which ensures $E(v_j) = 0$ by assuming that $E(\epsilon_j) = 0$. Here \mathbf{x} refers to a vector of exogenous or predetermined variables, which could include lags of the outcome and the treatment variables. Using the same notation as earlier, let $I(s_t) = I_t \in \{0, 1\}$ denote

the treatment indicator, which I will denote simply as I when the subscript is redundant to understand the main ideas. Hence, the average treatment effect (under linearity) can be written as:

$$\begin{aligned} E[y(1)|I = 1] - E[y(0)|I = 0] &= E[E[y(1)|\mathbf{x}, I = 1] - E[y(0)|\mathbf{x}, I = 0]] \\ &= E[\mu_1 + E[\mathbf{x} - E(\mathbf{x})|I = 1]\gamma_1 + E(\epsilon_1|I = 1)] \\ &\quad - E[\mu_0 + E[\mathbf{x} - E(\mathbf{x})|I = 0]\gamma_0 + E(\epsilon_1|I = 0)]. \end{aligned}$$

Note that $E(\epsilon_j|I = j) = 0$ for $j = 0, 1$ by assumption. Further, by adding and subtracting $E[\mathbf{x} - E(\mathbf{x})|I = 1]\gamma_0$, the previous expression can be rearranged into:

$$\begin{aligned} E[y(1)|I = 1] - E[y(0)|I = 0] &= \mu_1 - \mu_0 \\ &\quad + E[\mathbf{x} - E(\mathbf{x})|I = 1](\gamma_1 - \gamma_0) \\ &\quad + (E[\mathbf{x} - E(\mathbf{x})|I = 1] - E[\mathbf{x} - E(\mathbf{x})|I = 0])\gamma_0. \end{aligned} \quad (8)$$

[Equation 8](#) hence decomposes the effect of treatment into three components: (1) a *direct* effect coming from the difference in unconditional means between treated and control subpopulations; (2) an *indirect* effect due to differences in the manner the covariates affect the outcome, which leads to the natural hypothesis, $H_0 : \gamma_1 = \gamma_0$; and a *composition* effect due to the fact that in small samples, random assignment is imperfect. A test of the balance condition—if assignment is truly random, the means of the covariates should be the same in the treated and control subpopulations—is therefore a test of the null $H_0 : \mu_x^1 = \mu_x^0$.

Based on these standard derivations, [Cloyne et al. \(2023\)](#) show that, under fairly general assumptions, these three effects can be obtained from the augmented local projection:

$$y_{t+h} = \underbrace{\mu_0^h + (\mathbf{x}_t - \bar{\mathbf{x}})\gamma_0^h + I_t\beta^h}_{\text{usual LP}} + \underbrace{I_t(\mathbf{x}_t - \bar{\mathbf{x}})\boldsymbol{\theta}^h}_{\text{interaction}} + v_{t+h}, \quad (9)$$

for $h = 0, 1, \dots, H; t = h, \dots, T$ where v_{t+h} is a residual term. Based on this linear regression in the parameters, note that one can calculate the following three elements of the Kitagawa decomposition as:

$$\begin{aligned} \text{Direct effect:} &\quad \hat{\mu}_1^h - \hat{\mu}_0^h = \hat{\beta}^h, \\ \text{Indirect effect:} &\quad (\bar{\mathbf{x}}_1 - \bar{\mathbf{x}})(\hat{\gamma}_1^h - \hat{\gamma}_0^h) = (\bar{\mathbf{x}}_1 - \bar{\mathbf{x}})\hat{\boldsymbol{\theta}}^h, \\ \text{Composition effect:} &\quad (\bar{\mathbf{x}}_1 - \bar{\mathbf{x}}_0)\hat{\gamma}_0^h, \end{aligned}$$

Cloyne et al. (2023) highlight several interesting features of this decomposition. First, the local projection in Equation 9 is still linear in the parameters and therefore, very easy to estimate. Second, as Fortin et al. (2011) highlight, the decomposition is non-causal, unless the x_t are identified (say using an instrument). As long as interventions are as if randomly assigned with respect to the stratification, this should pose not problem.¹⁰ Third, if the sample is balanced, then the composition effect will be approximately zero since $\bar{x}_0 \approx \bar{x}_1 \approx \bar{x}$, which provides an easy way to check for failure of identification. Fourth, on average, the indirect effect will be close to zero in a balanced sample since, as we have just seen, $\bar{x}_1 \approx \bar{x}$. However, the indirect effect can be quite large for individual values of x_t , which can easily deviate from \bar{x} . Fifth, note that the interaction of the treatment with x_t means that for each value of x_t we obtain a different impulse response. In other words, we just made the impulse response time-varying as long as $\theta^h \neq 0$.

As an example, consider a highly stylized economy. Suppose y_t refers to an economic activity outcome (e.g. output growth); let x_t refer to a monetary policy stance (say the difference between the policy rate and the natural rate), which for simplicity I assume to have mean zero; and let $I_t \in \{0, 1\}$ if the government implements a fiscal consolidation ($I_t = 1$) of size s_t . These variables are assumed to be generated by the following potential outcomes model:

$$\begin{aligned} y_t(0) &= \mu_0 + \gamma_0 x_t + u_t^y & \text{if } I_t = 0 \\ y_t(1) &= \mu_1 s_t + \gamma_1 s_t x_t + u_t^y & \text{if } I_t = 1, \end{aligned}$$

that is, if there is a fiscal consolidation, $I_t = 1$, the effect is scaled by the size of the consolidation, s_t . Further assume that:

$$\begin{aligned} s_t &= \rho_s s_{t-1} + u_t^s \\ x_t &= \rho_x x_{t-1} + u_t^x, \end{aligned}$$

so that the observed data are generated by:

$$y_t = \mu_0 + \gamma_0 x_t + I_t s_t (\beta + \theta x_t) + u_t^y.$$

Both policy variables, x_t , and I_t (and indeed s_t) are determined at random, which is not how we expect an economy to operate, of course. In this setting, suppose that we are interested in the impulse response to a fiscal consolidation of size $s_t = 1$ given that the

¹⁰Gonçalves, Herrera, Kilian & Pesavento (2022), following Cloyne et al. (2023), emphasize this point.

monetary policy stance is x_t :

$$\mathcal{R}_{sy}(h) = \beta\rho_s^h + \theta\rho_x^h x_t.$$

If the monetary stance is neutral ($x_t = 0$), or if $\gamma_0 = \gamma_1$, then $\mathcal{R}_{sy}(h) = \beta\rho_s^h$, the usual impulse response in a linear model. However, if the stance is not neutral ($x_t \neq 0$) and $\gamma_0 \neq \gamma_1$, then the term $\theta\rho_x^h x_t$ will modulate the initial response to a fiscal consolidation. It is easy to see that the local projection in [Equation 9](#) would deliver direct estimates with which to construct $\mathcal{R}_{sy}(h)$ for any value of x_t .

[Figure 3](#) provides an example of the type of analysis that the Kitagawa decomposition allows. It is based on a simulation of the simple example we just discussed. Panel (a) of the figure shows that, for each observation in the sample, x_t will attain a different value, which in turn will accentuate or attenuate the response. This is the most visible for the response to s_t on impact (the solid, blue line). To reinforce this point, panel (b) shows the response when $x_t = 0$ in solid blue with 2 standard error confidence bands. The response is purposely designed to be almost 0. However, note that depending on the value of the 2nd treatment variable, x_t , the response can be greatly accentuated (nearly 2 on impact) or greatly attenuated (nearly -2 instead).

At this point, it is helpful to draw the connections to the multiplier calculation reported earlier. Let's focus on the fiscal experiment when the monetary stance is in neutral, i.e., $x_t = 0$. In that case, $\mathcal{R}_{sy}(h) = \beta\rho_s^h$, and the multiplier m_h is easily seen to be the same as that calculated in [section 3](#), that is $m_h = \beta$. However, when $x_t \neq 0$, then $\mathcal{R}_{sy}(h) = \beta\rho_s^h + \theta\rho_x^h x_t$ and in this case the multiplier is:

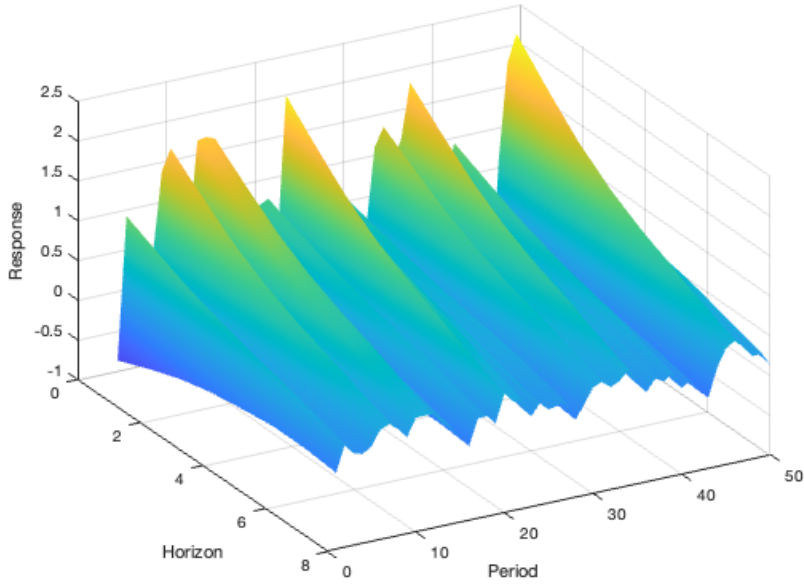
$$m_h(x_t) = \frac{\sum_{j=0}^h \mathcal{R}_{sy}(j)}{\sum_{j=0}^h \mathcal{R}_{ss}(j)} = \frac{\sum_{j=0}^h \beta\rho_s^j + \theta\rho_x^j x_t}{\sum_{j=0}^h \rho_s^j} = \beta + \underbrace{\theta x_t \frac{(1 + \rho_x + \rho_x^2 + \dots + \rho_x^h)}{(1 + \rho_s + \rho_s^2 + \dots + \rho_s^h)}}_{K_h(x_t)}.$$

In other words, the earlier equivalency between the multiplier and the average treatment effect breaks down since now $m_h(x_t) = \beta + K_h(x_t)$, which is a function of x_t .

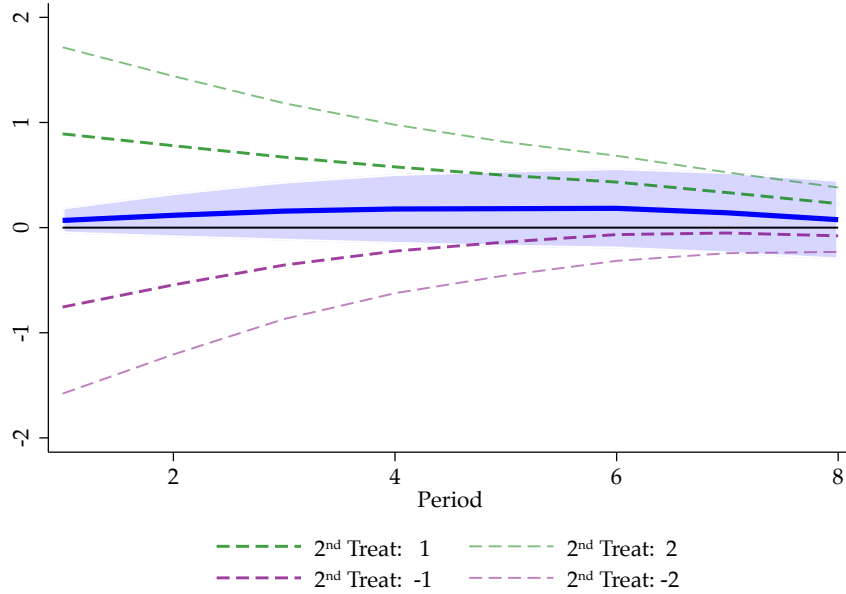
10. PANEL DATA LOCAL PROJECTIONS

The ability to estimate impulse responses with univariate regression greatly facilitates their calculation in panel data settings. Given a sample of $i = 1, \dots, n$ units observed over

Figure 3: Kitagawa decomposition of the impulse response



Panel (a): Variation of the response over time as a function of x_t



Panel (b): Variation by value of secondary treatment x_t

Notes: Both panels in the figure based on simulated data like in the example discussed in the text. Panel (a) displays the variation of selected impulse response coefficients over time due to variation in x_t . Panel (b) shows how the impulse response varies depending on different values of x_t .

$t = 1, \dots, T$ periods, the local projection can be written as:

$$y_{i,t+h} = \alpha_i + \delta_t + \beta_h s_{it} + \gamma_h x_{it} + v_{i,t+h},$$

where α_i are unit fixed effects and δ_t are time fixed effects. Because lags of the endogenous variable are often included in x_{it} , potential incidental parameter biases could arise in short panels with a highly serially correlated endogenous variable (see, e.g. [Álvarez & Arellano, 2003](#)). In such situations, an Arellano-Bond estimator or subsequent refinements are recommended (see, e.g. [Arellano & Bond, 1991](#); [Arellano & Bover, 1995](#); [Blundell & Bond, 1998](#)).

Panels, in principle, offer opportunities to take advantage of the cross-sectional and time-series dimensions to adjust standard errors for serial correlation and potential heteroscedasticity. Intuitively, clustering by unit/group uses the cross-sectional dimension to calculate autocovariances, thus adjusting for serial correlation non-parametrically and adjusting for clustering and heteroscedasticity. Clustering by time exploits the time-dimension to construct residual-variance estimates that vary by unit, thus correcting for heteroscedasticity non-parametrically.

However, the literature on clustered standard errors is rapidly evolving (see, e.g. [Abadie, Athey, Imbens & Wooldridge, 2023](#)). For example, [Petersen \(2009\)](#) emphasizes using clustering by unit rather than using Driscoll-Kraay standard errors ([Driscoll & Kraay, 1998](#))—the panel version of a Newey-West standard error, which emphasizes large T , small N asymptotics. Clustering by group relies on having a large number of groups so that the asymptotic approximation works in favor of clustering over Driscoll-Kraay. That said, [Petersen \(2009\)](#) finds the biases of Driscoll-Kraay to be relatively small in many situations. For short T panels, it seems Monte Carlos evidence indicates that it is sufficient to use time-fixed effects and one-way clustering.

[Cameron, Gelbach & Miller \(2008, 2011\)](#); [Cameron & Miller \(2015\)](#) emphasize that with small numbers of clusters, cluster robust inference can be wildly incorrect (i.e. small N , regardless of T asymptotics). In particular, simulation evidence in [Cameron & Miller \(2015\)](#) shows that there can be significant distortions, leading them to recommend bootstrap-based procedures (see also [MacKinnon, Nielsen & Webb, 2022](#)). Generally speaking, cluster-robust standard errors (and two-way clustering in particular) are highly sensitive to having a sufficient number of groups and time periods for the asymptotic theory to provide a good approximation.

To my knowledge, there is no theoretical result yet justifying lag augmentation procedures similar to those discussed earlier as a possible alternative/complement, though proving this result seems possible. As an example of an application of local projections in panels, I now discuss recent work by [Dube, Girardi, Jordà & Taylor \(2023\)](#).

10.1. Difference-in-differences with multiple treated groups and treatment periods

It has been well documented (see, e.g. [Callaway & Sant'Anna, 2021](#); [De Chaisemartin & d'Haultfoeuille, 2020](#); [Sun & Abraham, 2021](#); [Goodman-Bacon, 2021](#)) that either in static or distributed lag specifications where there are multiple treated groups and treatment periods with heterogeneous treatment effects, the traditional two-way fixed effects (TWFE) estimator can be severely biased. This is true even when parallel trends holds with staggered treatment effects that are dynamic and possibly heterogeneous.

Previously treated units are invalid controls for currently treated units, which creates problems in distributed lag specifications. However, this is easily handled with local projections by using the *clean control condition* of [Cengiz, Dube, Lindner & Zipperer \(2019\)](#). In particular, let $P_t = 0$ for any period before intervention and $\mathbf{1}$ thereafter; let $A_i = 0$ for an untreated unit, $\mathbf{1}$ if treated. Hence define $D_{it} = P_t \times A_i$. In a simple setting with no covariates, the difference-in-difference estimator of dynamic treatment effects can be estimated with:

$$y_{i,t+h} - y_{i,t-1} = \delta_t^h + \beta_h \Delta D_{it} + v_{i,t+h}; \quad h = 0, 1, \dots, H$$

by restricting the sample to observations that are either:

- treated: $\Delta D_{it} = 1$, or
- clean control: $\Delta D_{i,t+k} = 0$ for $k = -H, \dots, h$.

The key advantage of local projections over distributed lag TWFE estimators is that differencing is in the outcomes, not in treatments. [Dube et al. \(2023\)](#) show how the same estimator can be obtained by defining a dummy variable that is $\mathbf{1}$ for *unclean* controls by appropriately interacting this dummy variable with the regressors. I refer the reader to the original paper for more details.

Simulation evidence shows that the local projections approach is easier to implement, it is computationally much faster (which is important when using simulation-based inference, such as the bootstrap), and it provides consistent estimates of the treatment effects. Thus, this example shows that there are potentially many gains from incorporating local projections in other common situations in applied microeconomics where treatment effects may have effects over more than one period. Examples may include regression discontinuity designs, synthetic control, and so on.

11. CONCLUSION

In this review, I have focused on presenting the basic tools of local projections estimation so as to establish the nexus between applications in applied macro and applied microeconomics. That said, of necessity there is a great deal that fell on the editing floor. Examples include nonlinear applications of local projections such as to binary dependent data (see, e.g. [Ferrari Minesso, Lebastard & Le Mezo, 2022](#)), and quantile regression (see, e.g. [Jordà, Kornejew, Schularick & Taylor, 2022](#)); Bayesian estimation of local projections (see, e.g. [Tanaka, 2020](#); [Miranda-Agrippino & Ricco, 2021](#)); and smoothing and shrinkage methods (see, e.g. [Barnichon & Brownlees, 2019](#); [Barnichon & Matthes, 2018](#)), to name a few.

More importantly, I have argued that impulse responses and dynamic treatment effects are close relatives to the point that local projections can offer a bridge between two literatures that up to this point appear to have developed quite separately from one another: time series analysis and methods in applied microeconomics research. The review showcases several examples where these literatures intersect. The hope is that this review will spur much more research at this intersection.

ACKNOWLEDGMENTS

I am grateful to H elen  Rey for suggesting that I write this review and to my colleagues Colin Cameron, James Cloyne, Alan Taylor, and Takuya Ura for helpful suggestions.

REFERENCES

- Abadie A, Athey S, Imbens GW, Wooldridge J. 2023. When should you adjust standard errors for clustering? *Quarterly Journal of Economics* 138(1):1–35
-  lvarez J, Arellano M. 2003. The time series and cross-section asymptotics of dynamic panel data estimators. *Econometrica* 71(4):1121–1159
- Angrist JD, Jord   , Kuersteiner GM. 2018. Semiparametric estimates of monetary policy effects: String theory revisited. *Journal of Business and Economic Statistics* 36(3):371–387
- Angrist JD, Kuersteiner GM. 2011. Causal effects of monetary shocks: Semiparametric conditional independence tests with a multinomial propensity score. *The Review of Economics and Statistics* 93(3):725–747
- Arellano M, Bond S. 1991. Some tests of specification for panel data: Monte carlo evidence and an application to employment equations. *The Review of Economic Studies* 58(2):277–297

- Arellano M, Bover O. 1995. Another look at the instrumental variable estimation of error-components models. *Journal of Econometrics* 68(1):29–51
- Auerbach AJ, Gorodnichenko Y. 2012. Fiscal multipliers in recession and expansion. In *Fiscal Policy After the Financial Crisis*. University of Chicago Press, 63–98
- Barnichon R, Brownlees C. 2019. Impulse response estimation by smooth local projections. *Review of Economics and Statistics* 101(3):522–530
- Barnichon R, Matthes C. 2018. Functional approximations of impulse responses (fair). *Journal of Monetary Economics* 99(November):41–55
- Blinder AS. 1973. Wage discrimination: Reduced form and structural estimates. *The Journal of Human Resources* 8(4):436–455
- Blundell R, Bond S. 1998. Initial conditions and moment restrictions in dynamic panel data models. *Journal of Econometrics* 87(1):115–143
- Callaway B, Sant’Anna PH. 2021. Difference-in-differences with multiple time periods. *Journal of Econometrics* 225(2):200–230
- Cameron AC, Gelbach JB, Miller DL. 2008. Bootstrap-based improvements for inference with clustered errors. *The Review of Economics and Statistics* 90(3):414–427
- Cameron AC, Gelbach JB, Miller DL. 2011. Robust inference with multiway clustering. *Journal of Business & Economic Statistics* 29(2):238–249
- Cameron AC, Miller DL. 2015. A practitioner’s guide to cluster-robust inference. *Journal of Human Resources* 50(2):317–372
- Cengiz D, Dube A, Lindner A, Zipperer B. 2019. The Effect of Minimum Wages on Low-Wage Jobs. *The Quarterly Journal of Economics* 134(3):1405–1454
- Chong Y, Jordà Ò, Taylor AM. 2012. The harrod–balassa–samuelson hypothesis: Real exchange rates and their long-run equilibrium. *International Economic Review* 53(2):609–634
- Cloyne JS, Jordà O, Taylor AM. 2023. State-dependent local projections: Understanding impulse response heterogeneity. Tech. Rep. 30971, National Bureau of Economic Research. *Mimeograph*.
- Cox DR. 1961. Prediction by exponentially weighted moving averages and related methods. *Journal of the Royal Statistical Society: Series B (Methodological)* 23(2):414–422

- De Chaisemartin C, d’Haultfoeuille X. 2020. Two-way fixed effects estimators with heterogeneous treatment effects. *American Economic Review* 110(9):2964–96
- De Chaisemartin C, D’Haultfoeuille X. 2022. Difference-in-differences estimators of intertemporal treatment effects. Tech. rep., National Bureau of Economic Research
- Dolado JJ, Lütkepohl H. 1996. Making wald tests work for cointegrated var systems. *Econometric Reviews* 15(4):369–386
- Driscoll JC, Kraay AC. 1998. Consistent covariance matrix estimation with spatially dependent panel data. *Review of Economics and Statistics* 80(4):549–560
- Dube A, Girardi D, Jordà O, Taylor AM. 2023. A local projections approach to difference-in-differences event studies. Tech. Rep. 31184, National Bureau of Economic Research
- Ferrari Minesso M, Lebastard L, Le Mezo H. 2022. Text-based recession probabilities. *IMF Economic Review* 22:1–24
- Fortin N, Lemieux T, Firpo S. 2011. Decomposition Methods in Economics, vol. 4 of *Handbook of Labor Economics*, chap. 1. Elsevier, 1–102
- Frisch R. 1933. Propagation problems and impulse problems in dynamic economics, vol. 3 of *Publikasjon*. Oslo, Norway: Universitetets Økonomiske Institutt, 171–206
- Gonçalves S, Herrera AM, Kilian L, Pesavento E. 2022. When do state-dependent local projections work?
- Goodman-Bacon A. 2021. Difference-in-differences with variation in treatment timing. *Journal of Econometrics* 225(2):254–77
- Hansen LP, Heaton J, Yaron A. 1996. Finite-sample properties of some alternative gmm estimators. *Journal of Business & Economic Statistics* 14(3):262–280
- Hirano K, Imbens GW, Ridder G. 2003. Efficient estimation of average treatment effects using the estimated propensity score. *Econometrica* 71(4):1161–1189
- Horvitz DG, Thompson DJ. 1952. A generalization of sampling without replacement from a finite universe. *Journal of the American statistical Association* 47(260):663–685
- Inoue A, Kilian L. 2020. The uniform validity of impulse response inference in autoregressions. *Journal of Econometrics* 215(2):450–472

- Jordà Ò. 2005. Estimation and Inference of Impulse Responses by Local Projections. *American Economic Review* 95(1):161–182
- Jordà O. 2009. Simultaneous confidence regions for impulse responses. *The Review of Economics and Statistics* 91(3):629–647
- Jordà Ò, Kornejew M, Schularick M, Taylor AM. 2022. Zombies at large? corporate debt overhang and the macroeconomy. *Review of Financial Studies* 35(10):4561–4586
- Jordà O, Singh SR, Taylor AM. 2020. The long-run effects of monetary policy. Tech. Rep. 26666, National Bureau of Economic Research
- Jordà Ò, Taylor AM. 2016. The Time for Austerity: Estimating the Average Treatment Effect of Fiscal Policy. *Economic Journal* 126(590):219–255
- Keynes JM. 1936. The marginal propensity to consume and the multiplier. In *The General Theory of Employment, Interest, and Money*. Macmillan, 101–116
- Kitagawa EM. 1955. Components of a difference between two rates. *Journal of the American Statistical Association* 50(272):1168–1194
- Klein LR. 1968. Essay on the theory of economic prediction. Helsinki: Yrjö Jahnsson Lectures
- Kline P, Santos A. 2012. A score based approach to wild bootstrap inference. *Journal of Econometric Methods* 1(1):23–41
- Kuersteiner GM. 2005. Automatic inference for infinite order vector autoregressions. *Econometric Theory* 21(1):85–115
- Li D, Plagborg-Møller M, Wolf CK. 2022. Local projections vs. vars: Lessons from thousands of dgps. Tech. Rep. 30207, National Bureau of Economic Research
- Lusompa AB. 2021. Local projections, autocorrelation, and efficiency. *Mimeograph*, <https://drive.google.com/file/d/1prTQF0aHuikpFa5LH2Hoc0Q6cBWzpkwU/view>
- MacKinnon JG, Nielsen MØ, Webb MD. 2022. Cluster-robust inference: A guide to empirical practice. *Journal of Econometrics* 232(2):272–299
- Mahalanobis P. 1936. On the generalized distance in statistics. *Proceedings of the National Institute of Sciences (India)* 12
- Mertens K, Montiel-Olea JL. 2018. Marginal tax rates and income: New time series evidence. *Quarterly Journal of Economics* 133(4):1803–84

- Mertens K, Ravn MO. 2013. The Dynamic Effects of Personal and Corporate Income Tax Changes in the United States. *American Economic Review* 103(4):1212–1247
- Miranda-Agrippino S, Ricco G. 2021. Bayesian local projections. University of Warwick, Department of Economics
- Montiel-Olea JL, Plagborg-Møller M. 2019. Simultaneous confidence bands: Theory, implementation, and an application to svars. *Journal of Applied Econometrics* 34(1):1–17
- Montiel Olea JL, Plagborg-Møller M. 2021. Local projection inference is simpler and more robust than you think. *Econometrica* 89(4):1789–1823
- Mountford A, Uhlig H. 2009. What are the effects of fiscal policy shocks? *Journal of Applied Econometrics* 24(6):960–992
- Oaxaca R. 1973. Male-Female Wage Differentials in Urban Labor Markets. *International Economic Review* 14(3):693–709
- Petersen MA. 2009. Estimating standard errors in finance panel data sets: Comparing approaches. *The Review of Financial Studies* 22(1):435–480
- Plagborg-Møller M, Wolf CK. 2021. Local projections and vars estimate the same impulse responses. *Econometrica* 89(2):955–980
- Ramey V. 2016. Chapter 2 - macroeconomic shocks and their propagation. vol. 2 of *Handbook of Macroeconomics*. Elsevier, 71 – 162
- Ramey VA, Zubairy S. 2018. Government spending multipliers in good times and in bad: Evidence from us historical data. *Journal of Political Economy* 126(2):850–901
- Romer CD, Romer DH. 2004. A new measure of monetary shocks: Derivation and implications. *American Economic Review* 94(4):1055–1084
- Roth J, Sant’Anna PH, Bilinski A, Poe J. 2022. What’s trending in difference-in-differences? a synthesis of the recent econometrics literature. *arXiv preprint arXiv:2201.01194*
- Rubin DB. 1974. Estimating causal effects of treatments in randomized and nonrandomized studies. *Journal of Educational Psychology* 66(5):688–701
- Scheffé H. 1953. A method for judging all contrasts in the analysis of variance*. *Biometrika* 40(1-2):87–110
- Sims CA. 1980. Macroeconomics and reality. *Econometrica* 48(1):1–48

- Stock JH, Watson MW. 2012. Disentangling the Channels of the 2007-09 Recession. *Brookings Papers on Economic Activity* 43(1 (Spring)):81–156
- Stock JH, Watson MW. 2018. Identification and estimation of dynamic causal effects in macroeconomics using external instruments. *The Economic Journal* 128(610):917–948
- Sun L, Abraham S. 2021. Estimating dynamic treatment effects in event studies with heterogeneous treatment effects. *Journal of Econometrics* 225(2):175–199
- Tanaka M. 2020. Bayesian inference of local projections with roughness penalty priors. *Computational Economics* 55(2):629–651
- Tenreyro S, Thwaites G. 2016. Pushing on a String: US Monetary Policy Is Less Powerful in Recessions. *American Economic Journal: Macroeconomics* 8(4):43–74
- Toda HY, Yamamoto T. 1995. Statistical inference in vector autoregressions with possibly integrated processes. *Journal of Econometrics* 66(1-2):225–250
- Xu KL. 2023. Local projection based inference under general conditions. Tech. rep., Center for Applied Economics and Policy Research, Department of Economics, Indiana University